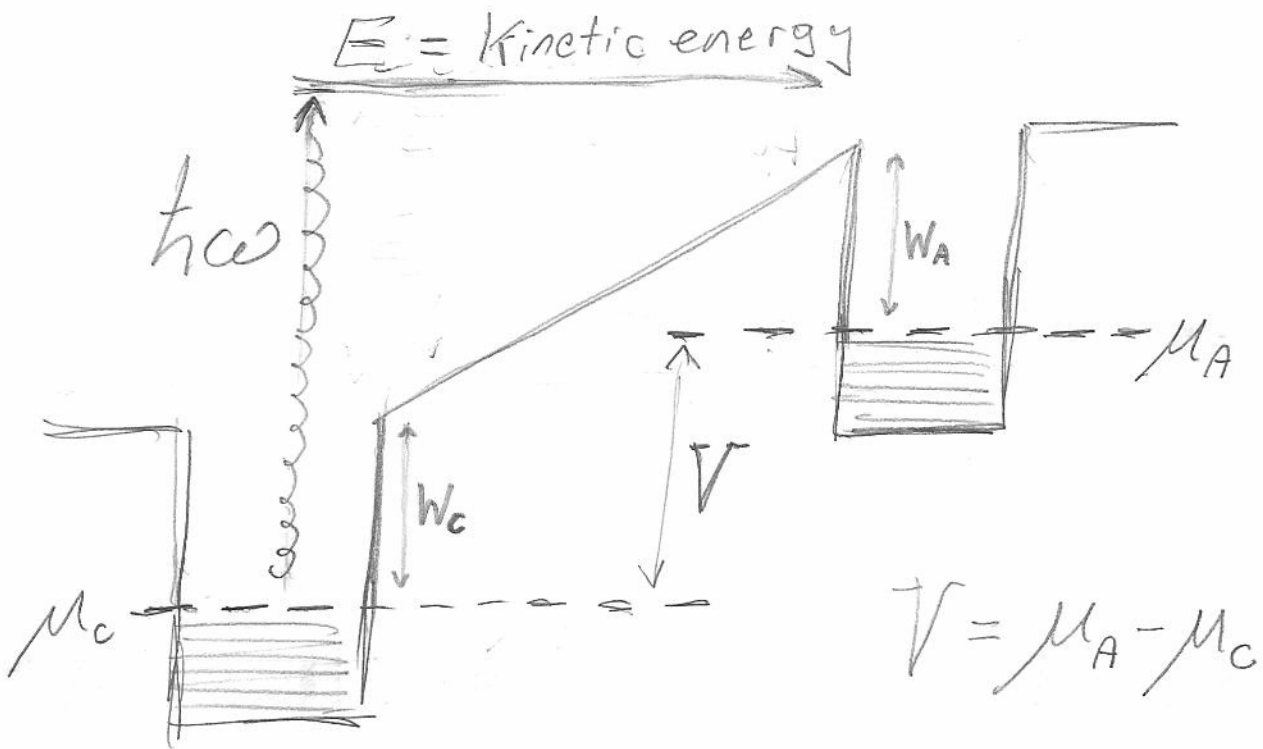


SPD  
 $V \rightarrow -V$   
 (reverse bias)



$$E(C) = \hbar\omega - W_C$$

$$V_{AC} = V + (W_A - W_C)$$

contact potential

$$E(A) = E(C) - V_{AC} = \hbar\omega - (V + W_A)$$

$I > 0$  iff  $E(A) > 0$